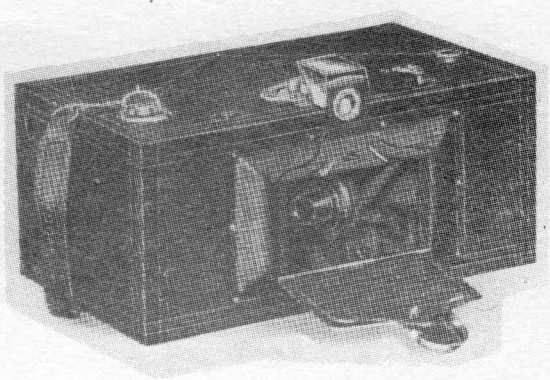


*Instructions for using the*  
**No. 3A**  
**Panoram Kodak**



**EASTMAN KODAK COMPANY**  
**ROCHESTER, N. Y., U.S.A.**

# "Kodak"

TRADE MARK

1888

EASTMAN KODAK COMPANY

ROCHESTER, N. Y.

*Manufacturers of*

KODAK BROWNIE AND  
GRAFLEX CAMERAS  
CINÉ-KODAKS KODASCOPIES  
KODAK FILM VELOX SOLIO  
EASTMAN BROMIDE PAPERS

KODAK FILM TANKS  
EASTMAN TESTED CHEMICALS  
KODAK DRY MOUNTING TISSUE  
TRIPODS AND OTHER PHOTO-  
GRAPHIC MATERIALS

*Trade Marks Reg. U. S. Pat. Off.*

April, 1926.

# "KODAKERY"

*A monthly magazine that teaches how to make better pictures, will be sent FREE OF CHARGE to anyone who buys one of our amateur cameras from a dealer in photographic goods, if this blank is filled out and sent to us within 30 days from the date the camera was bought.*

**EASTMAN KODAK COMPANY.**

**TO THE EASTMAN KODAK COMPANY,  
ROCHESTER, NEW YORK.**

*Accepting your offer, please put my name on the mailing list for "KODAKERY" (with the understanding that there is to be no cost to me), I having bought a*

TEAR OFF HERE

.....  
(Kind of Camera)

from.....  
(Name of Dealer)

on.....  
(Date Here)

**Print your name and address plainly:**

.....

.....

.....

**NOTE—KODAKERY will be sent for one year only on this offer. After that the subscription price will be sixty cents for one year or one dollar for two years, but you are under no obligation to renew.—E. K. Co.**

Form No. 360-26.

*Instructions for using the*

**No. 3A**

**Panoram Kodak**

*Published by*

**EASTMAN KODAK COMPANY**

**ROCHESTER, N. Y., U.S.A.**

## CONTENTS

Description of Panoram Kodak.....	5
Loading the Kodak.....	6
Making the Exposures.....	11
Removing the Film.....	15
Finishing the Pictures.....	18

## Order Film by Number

**T**HE No. 3A Panoram Kodak takes the same film cartridge as the No. 3A Autographic Kodak.

**A 122** is the number of the film for the No. 3A Panoram Kodak—the six-exposure spool for *three* Panoram pictures and the ten-exposure spool for *five* pictures.

All Kodak Films are distinguished by numbers on the ends of the cartons.

This number is also on the back of the Kodak and on the red paper of the cartridge.

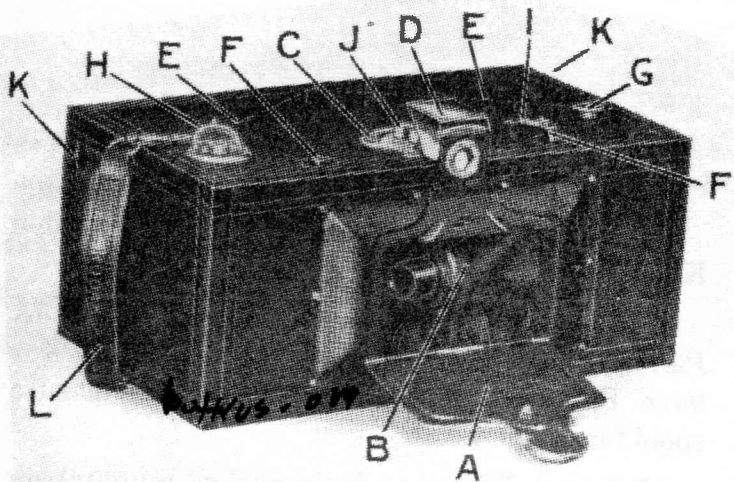


Fig. 1.

- |                      |                     |
|----------------------|---------------------|
| A LENS COVER OR FLAP | G SPOOL PIN         |
| B LENS AND SHUTTER   | H WINDING KEY       |
| C TENSION LEVER      | I SPEED INDICATOR   |
| D VIEW FINDER        | J T-LEVEL           |
| EE ANGLE OF VIEW     | KK CONCEALED SPRING |
| FF SHUTTER RELEASE   | CATCHES             |
| BUTTONS              | L CARRYING HANDLE   |

## Description of the No. 3A Panoram Kodak

**T**HE No. 3A Panoram Kodak is a camera of few parts. Its operation is very simple and good pictures will be obtained from the beginning, if the directions given in these pages are carefully followed.

Before loading with film make yourself familiar with the camera and its parts. Go through the instructions step by step, and make all the movements called for.

In Figure I on the opposite page, A is the lens flap or cover; this has been drawn down to uncover B, the lens and shutter which are a unit. The lens and shutter unit is driven by a spring which is "set" by moving the tension lever C from one side to the other. The finder D with its hood raised, shows part of the view as it will appear, within the limits set by the lines EE, which indicate the scope of the view.

Pressure on one of the shutter release buttons FF releases the spring, causing the lens and shutter to revolve in the opening and expose the film which extends across the back of the camera in a semi-circle from G to H. G is one of the spool pins on which the spools revolve (there are two on the under side of the camera). H is the winding key, which draws a new section of film into position for an exposure, and winds the exposed film on to the empty reel. The indicator I pointing to either "F" or "S" changes the speed of the shutter, making a fast or slow movement as needed.



J is a T-level for levelling the camera, vertically and horizontally. KK are concealed springs for opening the back and ends. L is the carrying handle.

In the back of the camera there is a small red window through which the number of the film can be seen. Tripod sockets for holding the camera on a tripod in the horizontal and vertical positions are provided.

Having gone over the camera and observed the movements of its various parts, read the directions for loading, exposing and unloading, and without any film in the camera, make all the movements called for. In this way there will be little possibility of spoiling any film through an unintentional exposure.

## Loading the Kodak

**T**HE No. 3A Panoram Kodak, like all other Kodaks, can be loaded and unloaded in daylight. These operations should be done in a subdued light, not in direct sunlight. This camera uses the regular 3A Kodak Film, No. A 122, the six- and ten-exposure spools for three and five Panoram exposures respectively.

1. To open the Kodak unhook the carrying handle and press the concealed springs KK at the rear upper corners of the sides, Fig. II, page 7, allowing the back to drop down and the sides to swing out, as in Fig. III, page 7.

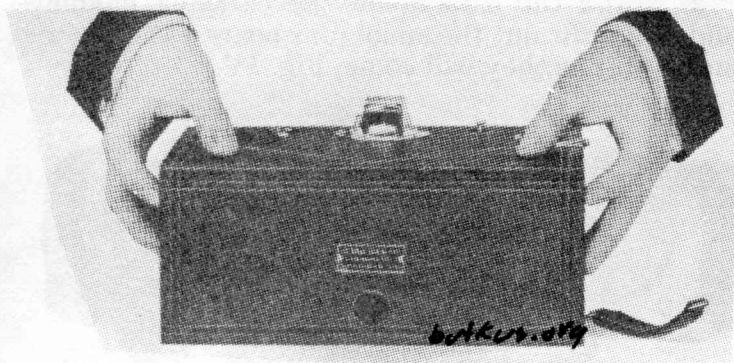


Fig. II.

At each end of the Kodak is a recess for the film spools. In the recess near the carrying handle is an empty spool. This serves as the reel onto which the film is wound after exposure. The full spool is to be placed in the opposite end of the camera.

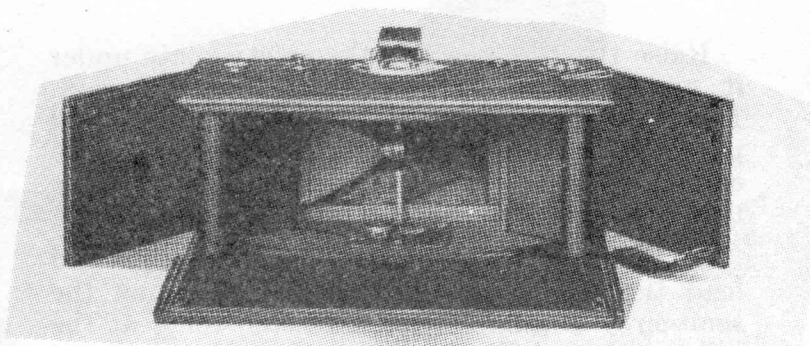


Fig. III.

2. Stand the camera on the carrying handle end and draw out the spool pins nearest the other end, as far as they will come, Fig. IV.

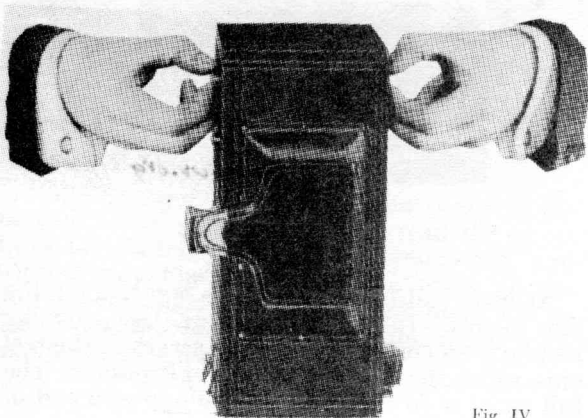


Fig. IV.

Raise the top end and the safety plate under it, and insert the film cartridge, Fig. V, page 9. Be sure that the word "TOP" printed on the red paper is next to the winding key side of the camera. Push the spool pins into place and see that the spool revolves freely.

3. Remove the band that binds the film and lead the red paper over the roller, along the semi-circular guide strips, over the roller at the other end, and thread it into the *longer* opening in the slit of the empty reel, Fig. VI, page 10.

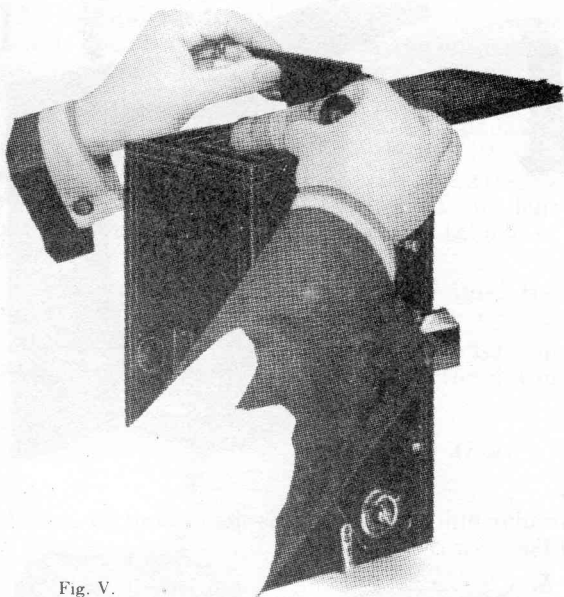


Fig. V.

From the time the band on the fresh roll of film is broken, until the camera is closed, *keep the red paper wound tightly on the roll*. If it should loosen, light will get in and fog or ruin the film.

4. Turn the winding key once or twice—just enough to bind the paper on the spool. The paper should now be in the position shown in Fig. VI, page 10. Be sure that the film follows the

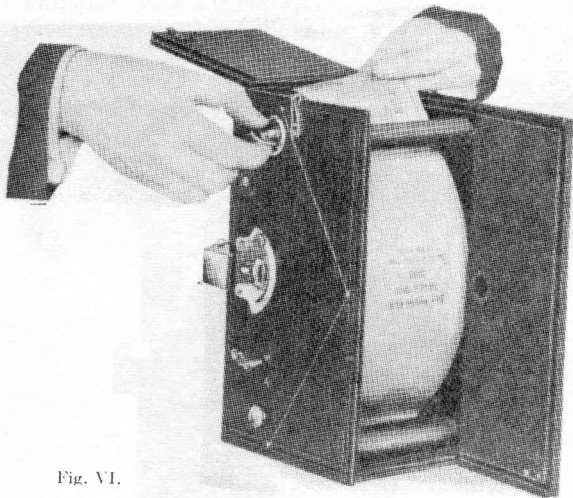


Fig. VI.

circular guide strips and is *not* around the outside of the thick corner posts.

5. Close the ends and back and replace the carrying handle.

6. After closing the camera turn the winding key about fifteen times, or until the figure 1 appears in the red window in the back of the camera. The film is now ready for the first picture.

## Making the Exposures

**T**HE Panoram Kodak as the name implies, is for wide out-door views with the subject at least *twenty feet from the camera*; and is for instantaneous exposures only.

The sun must be behind the back or over the shoulder. This is more imperative with the Panoram Kodak than with ordinary cameras, as the lens movement makes shading of the lens almost impossible and prevents the taking of pictures towards the light.

1. Drop the lens cover or flap and raise the hood of the finder to a right angle.

2. "Set" the shutter by moving the tension lever C, Fig. I, page 4, from one side of the slot in

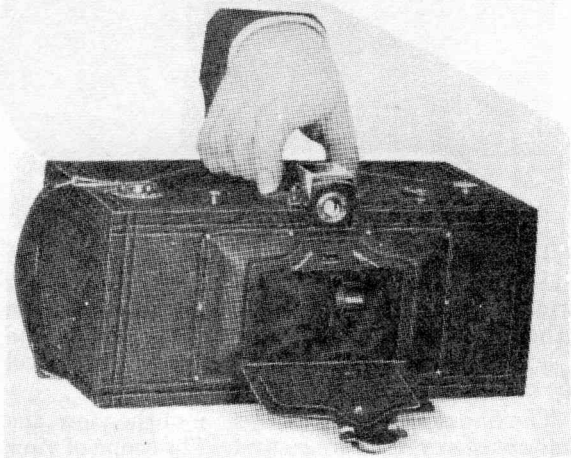


Fig. VII.

which it travels, to the other (Fig. VII, page 11.) Be sure to move it *all the way*—until it clicks.

The shutter is always “set,” ready for an exposure, when the lens and the tension lever are on the same side of the finder.

Be careful not to touch the release lever on the opposite side until ready to make an exposure, or the shutter will be released.

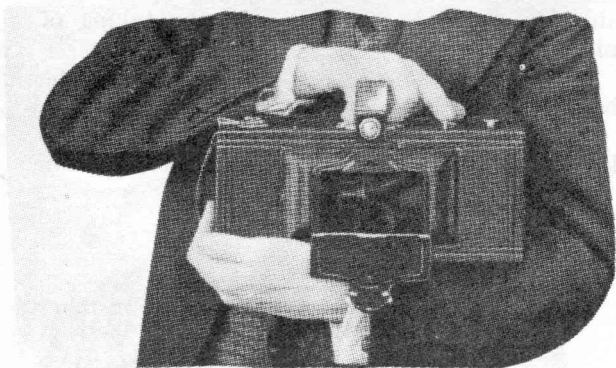


Fig. VIII.

The camera can be held on the arm as in Fig. VIII, or it may be on a tripod or some other firm, level support (Fig. IX, page 13), but in either position it must be level and steady. The T-level just behind the finder will help to level the camera.

The finder shows only a section of the view, the amount of sky and foreground. The scope of view or the width of the picture is indicated by the

V-shaped lines on the top of the camera. To see this view in the finder the camera will have to be turned carefully from side to side, within the limits set by the V-shaped lines.

3. All being ready for the exposure:

Hold the Kodak *steady*,

Hold it *level*,

and press the shutter release button—the one farthest from the tension lever. *This makes the exposure.*

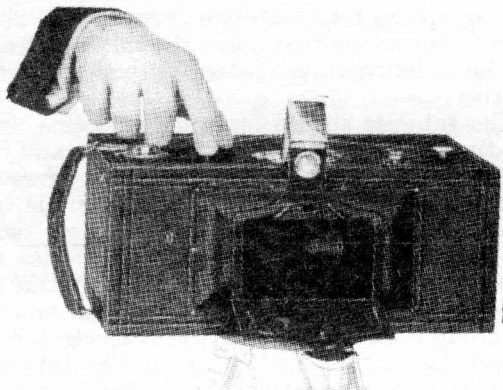


Fig. IX.

Immediately after an exposure, wind another section of film into position by turning the winding key until the next *odd number* appears in the red window—about six turns.

Repeat these operations for each exposure. Remember always to turn the winding key until an *odd number* appears in the window.



The letters F and S indicate the speed of the shutter and the indicator should be moved to "F" or "S" for a fast or slow exposure as required.

Use the "S" or slow exposure for all ordinary or average subjects.

Use the "F" or fast exposure for views at the seashore, on the water, and for very distant views when the sunlight is *unusually bright*.

### **Panoram Group Pictures**

The No. 3A Panoram Kodak is unequalled for photographing large out-door groups. The angle of view is so wide that a great number of people can be included without standing one in front of another.

The subjects should be in a semi-circle, each one the same distance from the camera, and this distance must never be less than twenty feet.

A quick and easy way to get the group in true semi-circular form is to swing a piece of string not less than twenty feet, from a peg near the camera, or held by an assistant, and line up the group on the arc described by the free end. If the group is unusually large the subjects can be arranged two, three or four deep. The tallest in the rear and the shortest in the front rank to avoid covering any faces.

Avoid horizontal lines in either the foreground or the background. Keep away from a straight board fence or a clap-boarded house. Such backgrounds are undesirable with any camera and especially so with the Panoram Kodak. Trees, shrubbery, or an open space are the most suitable.

## Vertical Panoram Pictures

For subjects that have more height than breadth, such as a high waterfall, a ravine or narrow gorge, or a high mountain, the Kodak will have to be operated in a vertical position. Stand the camera at eye level, on a tripod or other firm support, and adjust the hood of the finder to an angle of 45 degrees (where it will catch), and look into the mirror in the hood of the finder, where an inverted view of part of the subject will be seen,

With the camera in this position the *width* of the picture will be shown, while the height and depth will be indicated by the V-shaped lines (EE, Fig. 1, page 4). A little experiment and practice will yield some interesting and pleasing results.

## Removing the Film

**W**HEN changing the film in the Panoram Kodak keep out of the direct sunlight. The change should be made in subdued light.

1. After the last exposure has been made (No. 5 on a six-exposure roll and No. 9 on a ten-exposure roll) give the winding key about six turns or until the end of the red paper passes the window.
2. Open the back and sides of the Kodak, see Figs. II and III, page 7.
3. Hold the paper taut and turn the winding key until all the red paper is on the reel and a gummed sticker appears. Hold the end of the paper and the sticker together to prevent the

paper from loosening. If the sticker folds under the roll, turn the winding key to bring it up.

4. Draw out the spool pin and winding key to release the spool, and lift out the roll of exposed film, as in Fig. X.

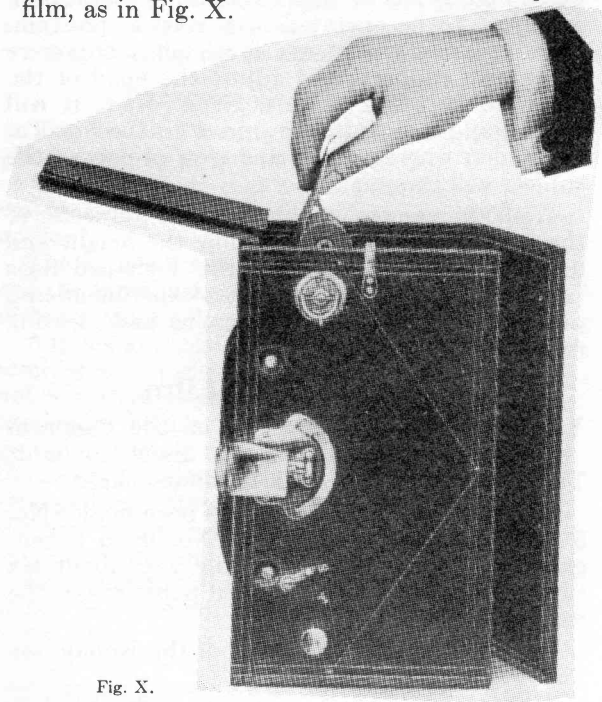


Fig. X.

5. Fold under about half-an-inch of the end of the red paper, to make subsequent breaking of the seal easy, and fasten with the sticker.

6. Wrap up the exposed film immediately to protect it from light and dust. The film is now ready for developing and printing.

7. Remove the empty spool, first drawing out the spool pins, and put it in the recess in the other end of the camera. Fit the web on the winding key into the slotted end of the spool, and the spool pin into the other end.

The Kodak is now ready for reloading.

**Important:** Film should be developed as soon as possible after exposure, as the quality of all sensitized products is retained by prompt development after exposure.

### **“Cinch” Marks**

If the film and paper loosen up a trifle when taken from the camera, there is an inclination to take the cartridge in the hand and wind it as closely as possible, “cinching” it tightly with a twisting motion. There is nothing more likely to injure the negatives than this tight drawing of the film, as it rubs the surface, making fine parallel scratches, running lengthwise of the film, which, in some cases, will ruin the negatives. *Do not “cinch” the cartridge.* It simply needs to be wound tightly enough to keep the red paper within the flanges of the spool.

### **Keep Dust Out of the Camera**

It is advisable to wipe out the inside of camera occasionally with a slightly damp cloth, especially if the camera has not been used for some time.

## Finishing the Pictures

**T**HERE are two distinct steps in the making of photographs—the picture *taking* and the picture *finishing*. To free our instruction books from unnecessary details, which might be confusing, we furnish with the camera the directions for *picture taking* only.

These instructions are ample for the handling of the camera under practically all conditions. Similarly, those who wish to do their own developing and printing will find equally full instructions accompanying the Kodak Film Tanks (for developing in daylight).

To develop film (No. A 122) used in the No. 3A Panoram Kodak, obtain a 3½-inch Kodak Film Tank.

If the tray or dark-room method of development is preferred, the following articles will be needed:

- 1 Kodak Safelight Lamp (electric),
- 4 No. 3A Panoram Developing Trays, 3½x12,
- 1 Eight-ounce Graduate,
- 1 Stirring Rod,
- 1 Package Eastman Special Developer Powders,
- 1 Package Kodak Acid Fixing Powder,
- Velox Paper, size 3½x11,
- 1 Four-ounce Bottle Nepera Solution, for developing Velox,
- 1 No. 3A Panoram Kodak Printing Frame, 3½x12.

In keeping with our plan and purpose to provide the users of our cameras with every help in

the production of good pictures, we will be glad to furnish such developing and printing instructions, at any time, whether a tank or dark-room equipment is purchased or not.

With the Kodak Film Tank and Velox paper many amateurs find as great pleasure in the finishing of the pictures as in the taking of them, and are able to produce excellent pictures, by the simple methods we have worked out.

We never lose interest in the purchaser of a Kodak. We are not only willing but are anxious at all times to help solve any problems that may arise, either by sending the necessary printed instructions or by individual correspondence, through our Service Department. Making use of the knowledge of our experts places you under no obligation. Kodak Service is free—and goes with the purchase of every Kodak.

**EASTMAN KODAK COMPANY,**  
**ROCHESTER, N. Y.**

## PRICE LIST

<b>KODAK FILM CARTRIDGE No. A 122</b>	
3 Panoram exposures . . . . .	\$ .55
5 Panoram exposures . . . . .	.90
(The No. 3A Panoram Kodak uses the same film as the No. 3A Autographic Kodak.)	
<b>BLACK SOLE LEATHER CARRYING CASE, with Shoulder Strap, for the No. 3A Panoram Kodak</b>	8.00
<b>KODAK FILM TANK, 3½-inch</b> . . . . .	6.50
Duplicating Outfit for above Tank . . . . .	3.25
<b>DEVELOPER POWDERS for 3½-inch Kodak Film Tank, six powders</b> . . . . .	.25
<b>EASTMAN PYRO DEVELOPER POWDERS, (for dark-room development), six powders</b> . . . . .	.25
<b>EASTMAN HYDROCHINON DEVELOPER POWDERS (do not stain the fingers) six powders</b> . . . . .	.30
<b>EASTMAN PYRO DEVELOPER POWDERS, box of five tubes</b> . . . . .	.25
<b>EASTMAN HYDROCHINON DEVELOPER POWDERS, box of five tubes</b> . . . . .	.30
<b>EASTMAN SPECIAL DEVELOPER POWDERS, box of five tubes</b> . . . . .	.35
<b>STIRRING ROD THERMOMETER</b> . . . . .	1.25
<b>KODAK ACID FIXING POWDER, one-pound package</b>	.25
Half-pound package . . . . .	.15
Quarter-pound package . . . . .	.10
<b>VELOX PAPER, 3½ x 11, one dozen sheets</b> . . . . .	.45
<b>AZO PAPER, Grade F, Glossy, 3½ x 11, one dozen</b> . . . . .	.30
<b>NEPERA SOLUTION, for developing Velox or Azo, four-ounce bottle</b> . . . . .	.28
<b>VELOX TRANSPARENT WATER COLOR STAMPS (twelve colors)</b> . . . . .	.50

VELOX WATER COLOR OUTFIT, consisting of Artist's Mixing Palette, three special Camel's Hair Brushes, and one book of Velox Transparent Water Color Stamps (twelve colors) . . . . .	\$1.00
SOLIO PAPER, 3½ x 11, one dozen sheets . . . . .	.35
COMBINED TONING AND FIXING SOLUTION FOR SOLIO, eight-ounce bottle . . . . .	.50
Four-ounce bottle . . . . .	.30
KODAK CANDLE LAMP . . . . .	.40
KODAK SAFELIGHT LAMP, with Series 1 Safelight . . . . .	3.50
BULL'S EYE COMPOSITION TRAYS, 3½ x 12, each . . . . .	1.30
EASTMAN VISIBLE GRADUATE, eight-ounce . . . . .	.50
NO. 3A PANORAM KODAK PRINTING FRAME, 3½ x 12 inch . . . . .	1.15
KODAK DRY MOUNTING TISSUE, 3½ x 11, one dozen . . . . .	.10
EASTMAN FILM DEVELOPING CLIPS, 3½-inch, nickeled, per pair . . . . .	.30
KODAK JUNIOR FILM CLIPS No. 1, each . . . . .	.15
KODAK METAL TRIPOD, No. 0 . . . . .	2.75
No. 1 . . . . .	4.50
No. 2 . . . . .	5.00
LEATHER CARRYING CASE, for Kodak Metal Tripod, Nos. 0, 1 or 2 . . . . .	2.70
"HOW TO MAKE GOOD PICTURES," an illustrated book for the amateur that includes many help- ful suggestions; it shows various methods of making exposures, developing, printing, en- larging, lantern slide making, coloring, etc., . . . . .	.50



---

---

## Developing, Printing and Enlarging

Developing Film, $3\frac{1}{4}$ x $10\frac{3}{8}$ , three-exposure cartridge (No. 3A Panoram Kodak) . . . . .	\$ .25
Five-exposure cartridge . . . . .	.40
Velox Prints, $3\frac{1}{4}$ x $10\frac{3}{8}$ , unmounted, each . . . . .	.17
Velox Prints, mounted, each . . . . .	.25

*All prints unmounted unless otherwise specified.*

**NOTE**—When mailing film for developing, printing or enlarging, mark the package plainly with your name and address and write a letter of instructions, with remittance.

5 x 16 Bromide Enlargements, mounted on card, each . . . . .	\$1.25
$6\frac{1}{4}$ x 20 Bromide Enlargements, mounted on card, each . . . . .	1.75

**NOTE**—An additional charge of 20 cents will be made when enlargements are finished in Sepia.

*All prices subject to change without notice.*

**EASTMAN KODAK COMPANY,**  
**ROCHESTER, N. Y.**

# SERVICE DEPARTMENT

## ADDITIONAL ASSISTANCE FOR MAKING BETTER PICTURES

**A**LTHOUGH we give in this manual the essential directions for using the camera it accompanies, there are amateurs who wish for further knowledge of photography.

The Service Department is at their service, *your* service.

Do not hesitate to call on us for information on any photographic subject.

*We are at your service, write  
to us — there is no charge,  
no obligation.*

Address all Communications

SERVICE DEPARTMENT  
EASTMAN KODAK COMPANY  
ROCHESTER, N. Y.